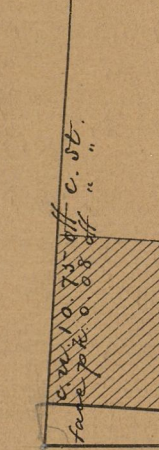


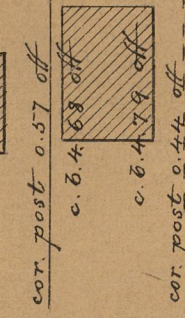
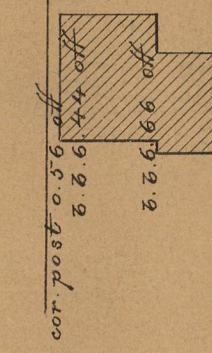
JENCKES ST.

ST.

50.15



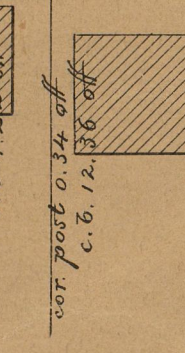
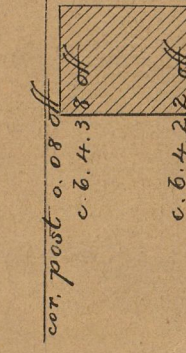
face post 0.04 on



cor. gran. post 0.47 on

cor. gran. post 0.44 on

CONGDON STREET



cor. gran. post 0.27 on

step 1.46 on

step 1.62 on

cor. gran. post 0.41 on

und. wall 0.80 on

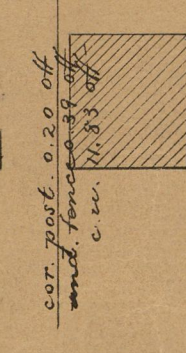
und. 0.74 on

step 1.82 on

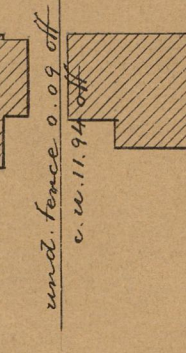
cor. wall 0.88 on C. St.

LLOYD ST.

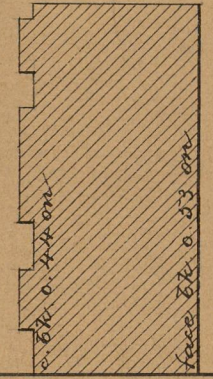
cor. gran. post 0.38 on C. St.



cor. gran. post 0.50 on



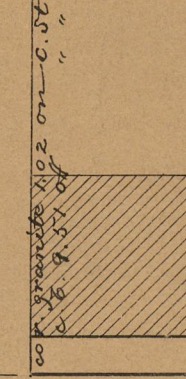
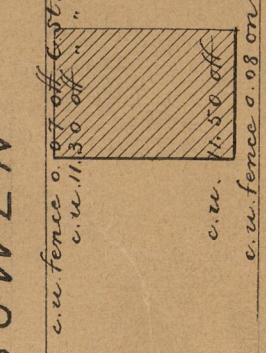
cor. post 0.55 on



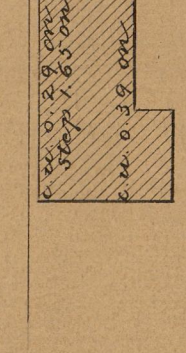
c. to fence 0.51 on C. St.

BOWEN ST.

ST.

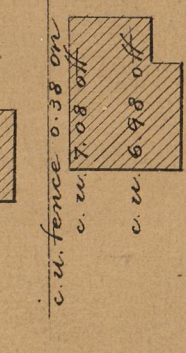


Scale 50 feet per inch.

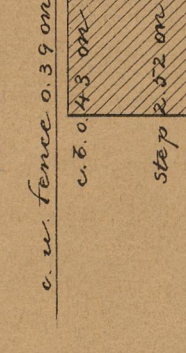


cor. wall 0.40 on

step 1.55 on



cor. gran. post 0.37 on

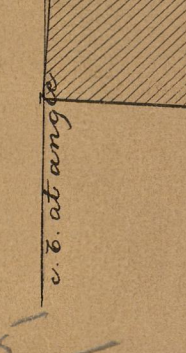


cor. wall 0.29 on

step 1.41 on

cor. wall 0.54 on

50.15



face wall 0.04 on

CUSHING ST.

cor. wall at base 0.95 on Congdon St.

F. B. B. VIII - 90-1.

PROVIDENCE, R. I.
CITY ENGINEER'S OFFICE
STREET LINE DEPT.

Oct. 7, 1889.

015535

OFFICE No. 10261
DRAWER 95
SHEET B-3

95
B36